



QUEEN'S PARK HIGH SCHOOL



Sixth Form Prospectus

Inspiring Individuals • Empowering Minds • Defining Futures

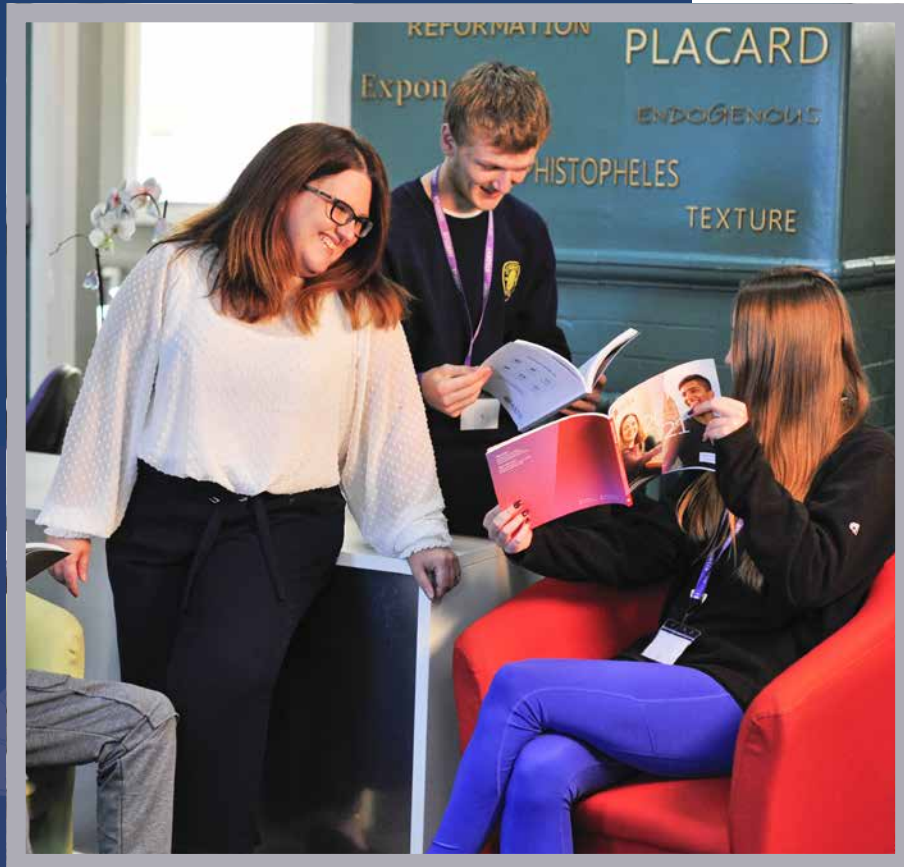




“Queen’s Park High School has provided me with a space to grow as an individual through the continuous support provided by teachers both inside and outside of lessons. The close-knit community formed within Sixth Form provides a space of comfort where we can all learn successfully.”

Julia, Year 13 Student

“Sixth Form has given me the opportunity to excel within my subjects through the friendly community, strong bonds with teachers and constant support. It has been an excellent experience and has helped me develop as an individual in preparation for Uni.”
Ioan, Year 13 Student



Welcome

Welcome to Queen’s Park High School Sixth Form. We are an academy within The Learning Trust, situated in the heart of Chester. We work in partnership with Christleton High School and Chester International School to serve young people; to educate, enlighten and give them the expertise, confidence and qualifications to succeed.

As a school and Sixth Form we have ambitious outcomes for all our students. Our vision and practice are underpinned by the following principles:

- *Inspiring Individuals*
- *Empowering Minds*
- *Defining Futures*

Our Sixth Form provides a wealth of opportunity to further your learning, experiences and ultimately to be part of a very successful, caring and vibrant Sixth Form in a school led by Miss Lyndsay Watterson who was awarded Cheshire’s Secondary School Headteacher of the Year in 2017.

We pride ourselves on being an inclusive Sixth Form that provides a wide range of courses suited to the needs of our learners and we are proud of the

results they achieve, which consistently compete with other local schools and on a national level. Moreover, we ensure that throughout your time in the Sixth Form, you are given a wide range of experiences and opportunities to develop as an individual and to support you with taking the important next steps into higher education, training or employment.

This prospectus is a small part of the information you will require in order to make an informed decision about your future. You will find a warm welcome and plenty of guidance and support available from our dedicated and experienced team in order to help you make these very important choices.

Mrs V Prydden
Mrs V Prydden
Head of Sixth Form

“There’s a real feeling of family in our sixth form. The smaller size and friendly atmosphere meant I felt pretty much instantly welcomed when I joined. There’s a close relationship between staff and students, and I feel very appreciated and at home here.”
Rory, Year 12 Student



Inspiring Individuals

We value the uniqueness of everyone in our school and we are committed to excellence in teaching as a core value across the curriculum, so that all members of our community are inspired to learn and achieve.

We have high expectations of all our students, particularly those within our Sixth Form. Our school works around three core values and expectations: Be *“Prepared, Engaged and Respectful”*. Our students enjoy being members of a caring community in which every individual is known and valued. The Sixth Form team work together to provide high levels of support and challenge to our students as they prepare for examinations and life beyond school.

“Positive relationships and strong subject knowledge are features of many lessons”
Ofsted June 2016

The academic outcomes for all of our students are excellent.

Students are set aspirational targets and are supported to meet them. Students are given regular feedback on progress and achievement so that they know how to improve.

“The new Head of Sixth Form is bringing greater rigour to the way that learners’ progress is checked and support is provided. More frequent and accurate assessment is ensuring that

learners and staff can be confident in predicting outcomes. The Head of Sixth Form is ambitious to bring about rapid improvement and the impact of this is seen already in stronger outcomes ...”

Ofsted June 2016

Students who wish to make Oxbridge and Russell Group applications are supported and coached and this has consistently resulted in offers being made and students beginning degrees at leading universities.

“We are immensely grateful to all at Queen’s Park High School who have influenced our sons’ school careers. Both have achieved outstanding A-level and GCSE grades and are proof of the very high standards of academic teaching provided. Other parents have asked us why we haven’t sent our academically able boys to a school with more focus on academic achievement. We are delighted to enlighten them: Queen’s Park High School provides that academic education to the highest level, but it does so much more besides and it is that which makes this school really stand out from the rest.”

Drs Dan and Nina Jones, Parents of Angus



“I am so grateful for my time at Queen’s Park Sixth Form and all the endless opportunities the school has provided me with. I am now fulfilling my aspirations of studying Natural Sciences at Lancaster University and that is thanks to the incredible amount of support the staff give to every student. The close-knit community of Queen’s Park Sixth Form is what makes it such a special and inspiring place to learn. I had the best experience at QPHS, and wouldn’t be where I am now without it. Thankyou.”

Olivia, Former Year 13 Student and Deputy Head Girl





“Leaders have broadened the range of subjects that they offer to better reflect students’ needs and interests within the context of a small sixth form”

Ofsted Jan 2020

Empowering Minds

We believe that everyone has ideas to share, aspirations to realise, and opinions that matter. It is our mission to liberate young people to think freely, without constraint and beyond limits.

We pride ourselves on our innovative and flexible curriculum which is designed to meet the needs of all our learners; we offer a range of academic A Levels and vocational courses.

opportunities such as Head and Deputy Head Students, House Captains and Prefects..

The Henry Rogers Sixth Form Centre

Henry was in the Sixth Form at Queen’s Park High School when he tragically lost his life at the Hillsborough disaster.

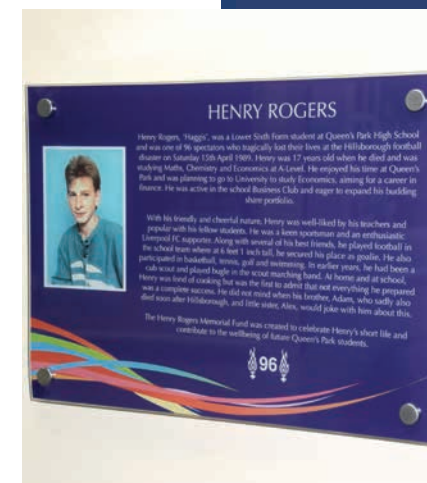
Our curriculum is reviewed annually and tailored according to the interests and needs of each cohort. Students are taught by experienced subject specialists who have a strong track record in supporting them to achieve their best. Wider opportunities underpin our academic success with an expectation for students to be involved in school and community life.

Shortly after, in memory of their son, his family set up the Henry Rogers Memorial Fund to support students at the school. One project to benefit from this fund was the refurbishment of the Sixth Form Centre. Within the Henry Rogers Sixth Form Centre there are facilities to enable students to revise, refresh and socialise. Additionally, Sixth Form students benefit from designated study and conference room spaces, a computer suite within the Library Learning Centre and their own on site café, ‘The Beach’.

“Sixth form learners have opportunities for leadership and the chance to develop skills for life through the Development of the Individual Programme” Ofsted June 2016.

Student leaders have a huge role to play and at Queen’s Park High School we pride ourselves on providing a wide range of

The centre has captured a truly comfortable and yet purposeful atmosphere. We are delighted that this is a lasting legacy and will benefit the students in a positive way for many years to come”.
Mr Rogers





"I have been at the school since Year 7 and the journey right the way through to Year 12 has been welcoming, especially the rowing club which has boosted my social skills and will give me greater opportunities in the future."
James, Year 12 Student



Defining Futures

We are guided by the knowledge that the foundations of every young person's tomorrow are laid today. By achieving excellence in all that we do, we aim to make today's young people tomorrow's era defining leaders, thinkers and pioneers.

The school has an excellent reputation for providing a wide range of high quality extra-curricular activities. We encourage our Sixth Form students to get involved in the wider life of school as we feel that it helps our young people to become well rounded individuals with a great deal to offer universities and employers in life beyond Sixth Form.

Opportunities include drama, music, sport (including a very successful rowing team), STEM activities, charity events to name but a few. Our post sixteen students also have opportunities to take part in a wide range of extra-curricular visits in this country and abroad.

"Queen's Park High School has expanded my views, beliefs and aspirations. A recent trip to Cambridge has motivated me to achieve my potential and inspired me to apply to university. The school has fuelled my ambitions and I believe this will enable me to reach my goals."

Tom, Year 12 Student

All students will complete a one week work experience placement at the end of Year 12 and our links with businesses and providers such as Enabling Enterprise and Changing Educations mean that students develop employability skills alongside academic qualifications, making them truly prepared for their next steps in a competitive world.

"The Sixth Form is consistently successful in ensuring that all learners go on to further education, training or employment."

Ofsted June 2016

During their time in the Sixth Form, students will have access to the Unifrog programme which supports students with decisions about, and applications to university and higher level apprenticeships. Through our PSHE and Citizenship programme, students work closely with local and Russell Group Universities to develop their understanding of how to make successful applications to competitive courses.



Students achieve outstanding exam results with 23% of all A level grades awarded at A* - A in 2020



“Queen’s Park High School Sixth Form is alive with friendship and synergy, the house system and leadership roles mean there is always a possibility to give your input and a long list of people to go to for help and guidance.”

Dan, Year 13 Student

Advice and Guidance

We offer support to all applicants throughout the decision making process whether they be current students or applicants who are currently studying elsewhere.

Our experienced Pastoral Team will advise students on appropriate pathways for study in our inclusive Sixth Form. IAG interviews are offered to all students by senior members of staff and can be organised for external students at a convenient time. Careers advice from an independent Level 6 qualified careers adviser is also available to all students during the decision making process and as part of their on-going IAG during their time in the Sixth Form.

“Learners are very positive about the Sixth Form. They feel the range of choices is good; the support they receive is helpful and they have confidence that they will reach their targets. They praise the quality of careers advice and feel very well informed about choices before they entered the Sixth Form and what options are available to them when they leave.”

Ofsted June 2016

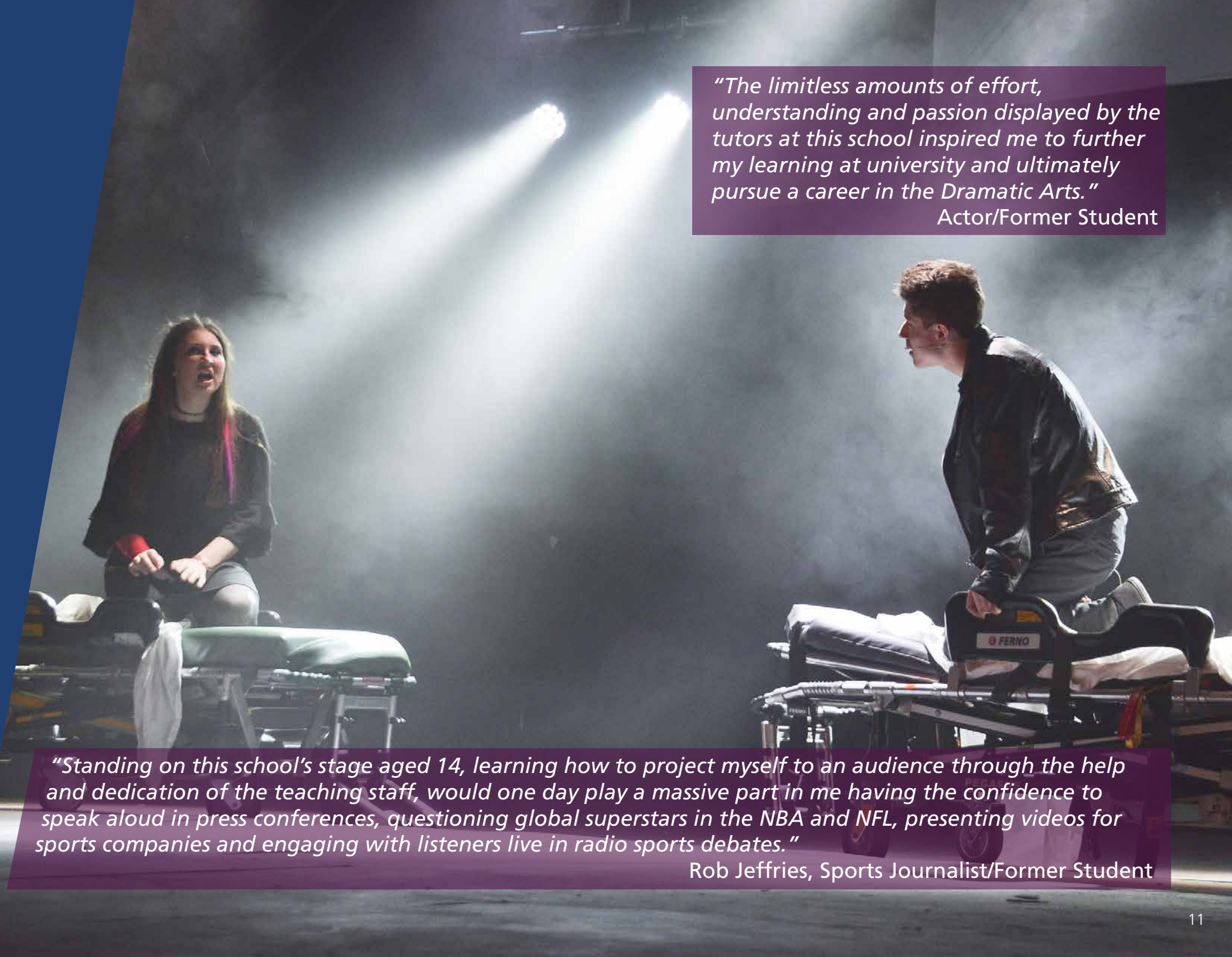
Minimum Entry Requirements

Full A-Level Package (3-4* A Level courses)

- 5+ GCSEs at grades 9-4 including a strong pass (grade 5) in English and Maths
- Grade 6 entry requirement for Maths A level
- Grade 5 entry requirement for Sciences A levels
- * The option to take four A Level courses will be made only in exceptional circumstances

Level 3 Package (mix of A Level and vocational Level 3 courses)

- 5+ GCSEs at grades 9-4
- Grade 6 entry requirement for Maths A level
- Grade 5 entry requirement for Sciences A levels



“The limitless amounts of effort, understanding and passion displayed by the tutors at this school inspired me to further my learning at university and ultimately pursue a career in the Dramatic Arts.”

Actor/Former Student

“Standing on this school’s stage aged 14, learning how to project myself to an audience through the help and dedication of the teaching staff, would one day play a massive part in me having the confidence to speak aloud in press conferences, questioning global superstars in the NBA and NFL, presenting videos for sports companies and engaging with listeners live in radio sports debates.”

Rob Jeffries, Sports Journalist/Former Student

How to Find and Contact Us

"... an inclusive Sixth Form" Ofsted

Come and visit us to find out more



-  01244 257088
-  6form@qphs.co.uk
-  www.qphs.co.uk
-  @qphs6thform @qphschester @qphs_6th_Lead
-  QPHS Chester
-  @qphschester



Queen's Park High School
Sixth Form Centre
Queens Park Road
Chester CH4 7AE



- *Inspiring Individuals*
- *Empowering Minds*
- *Defining Futures*