



QUEEN'S PARK
HIGH SCHOOL

Prospectus



“Inspiring Individuals • Empowering Minds • Defining Futures”



*Secondary School Headteacher of the Year 2017 –
Miss Lyndsay Watterson*



Welcome

I would like to wish you a warm welcome to Queen's Park High School, an academy within Christleton Learning Trust, in the heart of Chester. We work in partnership with Christleton High School and Christleton International Studio to serve young people, to educate, enlighten and give them the expertise and confidence to succeed.

Our school vision is **"Inspiring Individuals • Empowering Minds • Defining Futures"** and we aim to provide the very best learning and personal development opportunities for every young person that we serve.

We have committed, hard-working and dedicated staff, who regularly go above and beyond, to ensure that all our students enjoy their learning, feel safe and are able to achieve to their full potential. We are constantly striving to improve the quality of students' classroom experiences in our pursuit of 'great learning'. Our expectations in terms of achievement and behaviour are very high. If our students are to reach their full potential as responsible citizens, we believe there has to be a culture of mutual respect, honesty and understanding; a culture which is at the heart of our school community.

As Headteacher, I too, am committed to nurturing, motivating and inspiring all individuals to recognise their worth, develop their self-belief and strive to achieve their aspirations and goals.

I feel very privileged to be able to work with young people who endlessly impress me with their talents, skills and contributions both within and beyond the classroom. Our school is brimming with the potential for future excellence, which I know will flourish as we continue our exciting journey of school improvement. We would be delighted to welcome you to join us as we strive to become an 'outstanding' school in the near future.

I hope that this prospectus gives you a flavour of the many qualities and strengths of our school. As a prospective parent, carer or student, I would like to encourage you to come and visit us during the school day, so that you can experience these for yourself and find out more about our school. Please do not hesitate to phone or e-mail us to arrange a visit. We look forward to welcoming you to Queen's Park High School very soon.

Miss L Watterson

Miss L Watterson
Headteacher



Our Vision

As a school, Queen's Park High has ambitious outcomes for all its students. Our vision is founded upon the following principles:

- *Inspiring Individuals*
- *Empowering Minds*
- *Defining Futures*

Inspiring Individuals

We value the uniqueness of everyone in our school, and we have committed to make excellence in teaching the core value of our school, so that all members of our community are inspired to learn and achieve.

Empowering Minds

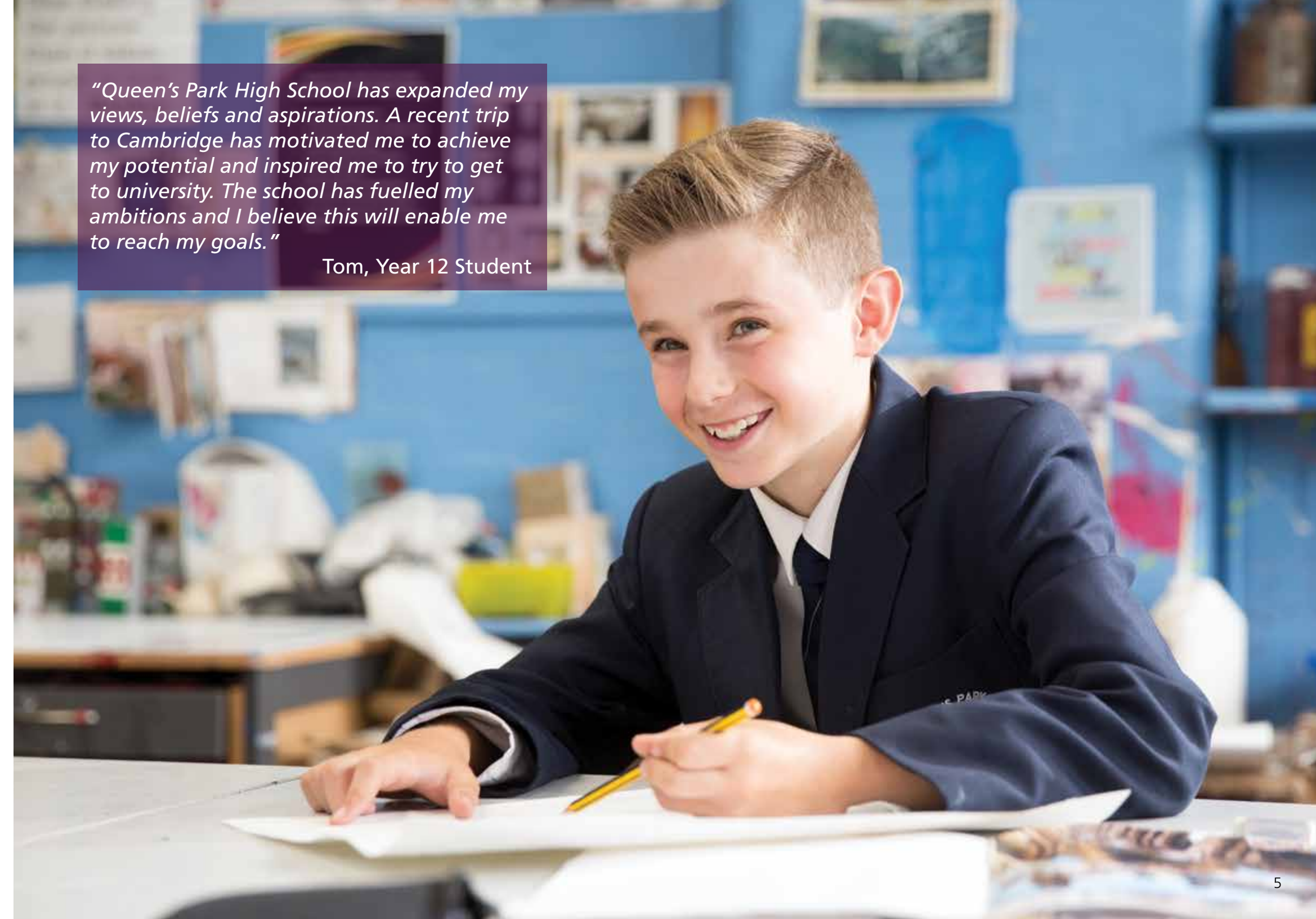
We believe that everyone has ideas to share, aspirations to realise, and opinions that matter. It is our mission to liberate young people to think freely, without constraint and beyond limits.

Defining Futures

In all that we do, we are guided by the knowledge that the foundations of every young person's tomorrow are laid today. By achieving excellence in all that we do, we aim to make today's young people tomorrow's era defining leaders, thinkers and pioneers.

"Queen's Park High School has expanded my views, beliefs and aspirations. A recent trip to Cambridge has motivated me to achieve my potential and inspired me to try to get to university. The school has fuelled my ambitions and I believe this will enable me to reach my goals."

Tom, Year 12 Student





"At Queen's Park High there is a really friendly atmosphere and all of the lessons are enjoyable."
Caitlin, Year 8 Student

Taking the Next Step

Moving to high school is an exciting time but we know it can be a bit daunting for children (and their parents!).

Our staff are friendly and approachable and will work with you to ensure that the transition is as smooth as possible.

We have strong links with our partner primary schools and also welcome a large number of children from across the Chester area. The projects we work on with Year 5 and Year 6 children give us the opportunity to build up a picture of your child as an individual. We get to know their strengths, aptitudes and preferred way of learning long before they join us in Year 7.

When starting at Queen's Park High School, your child will be placed in a tutor

group within one of our three Houses, Eaton, Grosvenor and Westminster. The House system provides opportunities to unlock our students' potential, with each House working collectively to support students and help remove any barriers to learning, creating a sense of belonging, identity and pride. When your child joins us we want them to feel safe and happy as we know this is the best way for them to achieve success. The size of our school allows us to meet our commitment to get to know each of our students personally and to ensure that they get the support they need to become active and integral members of our school community.

"The children at Belgrave benefit from excellent liaisons with Queen's Park High School on projects to enable children to have a smooth transition to high school."
Deanne Garratt, Headteacher, Belgrave Primary School





Challenge, Motivate, Achieve

The curriculum at Queen's Park High School is based on a number of guiding principles: aspiration, achievement and access.

We want all of our students to be able to experience an innovative and dynamic curriculum that prepares them to take their place in the world of work, as articulate, literate and confident adults. At every level, and in every subject, our mission is clear: we want every child to discover their aptitudes and talents; to be supported to maximise their potential; and to achieve their very best. Full details about our curriculum can be found on our website.



Key Stage 3

In Years 7 to 9 students are taught in ability sets in the core subjects of English, Maths and Science. They follow a broad and balanced curriculum including subjects such as Art, Drama, Geography, History, ICT, Music, PE, RE, Spanish and Technology. These foundation subjects are taught in mixed ability sets to foster a sense of co-operation and collaboration between students. Programmes of study and assessment points are carefully planned to ensure KS3 prepares students in the best way possible for the start of their GCSE courses. There is a well developed and comprehensive guidance programme around option choices in Year 9 so that students and parent are well informed, supported and consulted to ensure the right choices are made by each individual student to ensure success in their option choices for GCSE.



"Positive relationships and strong subject knowledge are features of many lessons."

Ofsted, June 2016

"I enjoy Queen's Park because the group tutors are there for you to rely on. The sports at the school are great and all the facilities help my learning. The ICT is great!"

James, Year 10 student



Challenge, Motivate, Achieve

Key Stage 4

At KS4 (Years 10 and 11) students have therefore carefully completed their option choices. We offer a wide range of GCSE qualifications well suited to students' interests and aspirations. We offer all the EBacc subjects of Geography, History, Computer Science, French and Spanish. This is in addition to the prescribed core curriculum of English, English Literature, Maths, PE, RE and Science (including the option of separate GCSEs in Biology, Chemistry and Physics). Additionally students can choose from a wide range of other options – including but not limited to – the following: ICT, Music, Art, Photography, Drama, Product Design, Business Studies, Leisure and Tourism, RE and Graphic Design. Students are taught in ability groups in the core: and in EBacc and option subjects where possible.

Key Stage 5

At Key Stage 5 (Years 12 and 13) the majority of our students choose to continue their studies here in the Sixth Form once they have completed Year 11. Alternatively we support students to move on to full time college places or to take up an apprenticeship within the local and surrounding area.

We have a strong track record in preparing students for Higher Education and our Key Stage 5 curriculum offers a wide range of courses at Level 3 including traditional A Levels, alongside vocational BTEC courses in a variety of subjects.

If you would like further information about Queen's Park High School's Sixth Form, please visit our website or request a copy of our Sixth Form prospectus.

"Skilful questioning to enable pupils to make connections and extend knowledge is a feature in many subjects."

Ofsted, June 2016



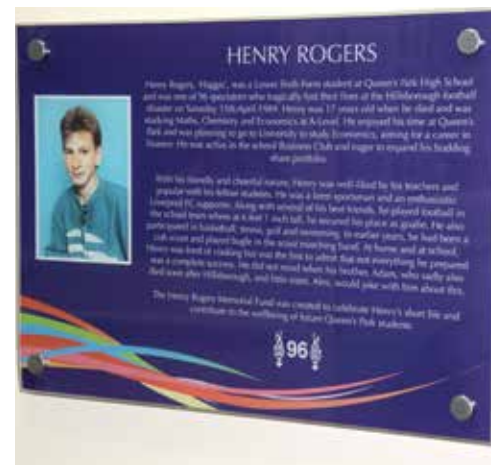


The Henry Rogers Sixth Form Centre

Henry was in the Sixth Form at Queen's Park when he tragically lost his life at the Hillsborough disaster over 25 years ago.

Shortly after that his family set up the Henry Rogers Memorial Fund to support students at the school in memory of their son. The latest project to benefit from the Fund is the refurbishment of the sixth form centre.

Within the Henry Rogers Sixth Form Centre there are facilities to enable students to revise, refresh and relax. Additionally, Sixth Formers have their own designated area within the school library which is equipped with a suite of computers. Entrance to the Sixth Form Centre is by electronically coded door lock, allowing our Sixth Formers to enter and exit the building at their convenience, whilst simultaneously keeping the building secure.



"The centre has captured a truly comfortable and yet purposeful atmosphere. We are delighted that this is a lasting legacy and will benefit the students in a positive way for many years to come."
Mr Rogers



"The Sixth Form is consistently successful in ensuring that all learners go on to further education, training or employment."
Ofsted, June 2016

Snack Bar Regeneration Project

"I really enjoyed the co-construction style of learning because it gave us independence to choose tasks that interested us. We had more freedom and could learn off each other."

Olivia, Year 9 Student

Creative Curriculum

As a former Specialist Visual Arts College we benefit from an exceptional range of teaching resources, facilities and opportunities to deliver art education at an extremely high level.

Facilities include two art studios, a ceramic studio, sculpture garden, art gallery and exhibition room. Our highly experienced staff deliver well established and popular courses in the visual arts which represent the enthusiasm and diverse interests of our students.

Every year we endeavour to take a group of Sixth Form students abroad on an Art & Design study tour to broaden their knowledge and help them develop their own studies and as individuals.

Results in the visual arts overall are frequently exceptional and the work of our students is regularly exhibited in our gallery and exhibition room.





Creative Curriculum

Perhaps the highlight of our performing arts calendar is the annual school production. With over 20% of the school population involved it is clear to see how this popular extra-curricular opportunity is as successful as it is.

With students auditioning for roles from September, the 6 month process challenges everyone involved to work incredibly hard as a member of a highly motivated and successful team which involves students from Year 7 right the way through to Year 13.

Students who are interested in the technical and backstage aspects of the production begin their work in October, with a range of opportunities available making use of our professional theatre equipment. Recent productions include: Hairspray, Return to the Forbidden Planet, Fame, Beauty and the Beast, Les Misérables, Disco Inferno, Little Shop of Horrors and Rock of Ages.

Further extra-curricular Performing Arts activities include:

- The QPHS choir
- The V factor
- School Shakespeare project
- Recording Studio Sessions
- Drama Club



"Pupils praise the wide range of extra-curricular opportunities in sport, music and performing arts particularly."

Ofsted, June 2016



"I loved my time at school so much that I never wanted to leave! In fact, it was so enjoyable I am now studying teacher training at university."
 Marianne, Former Student

Enrichment

We know the best possible school experience for your child offers learning and experiences beyond the academic.

At Queen's Park High School, we offer a wide range of extra-curricular activities, including sport, recreational and the performing arts, many of which take place at lunchtimes or after school. In addition, we finish early on Tuesday afternoons to provide a further optional enrichment programme which is reviewed and changed each term.

Examples of the clubs and enrichment activities we run are:

- BBC School Report
- Breakfast Club
- Dodgeball
- Duke of Edinburgh
- Dutch/Italian
- English/MFL early bird catch up
- Fitness
- Gardening Club
- Ichthus
- ICT Club
- International Film Club
- Master Chef
- Pilates
- Robotics
- Rugby
- STEM Club
- Taekwondo





Enrichment – Sport

We have a track record of sporting success.

In addition to the usual PE Curriculum, sporting activities include:

- Archery
- Basketball (girls & boys)
- Dodgeball
- Fencing
- Football (girls & boys)
- Indoor Rowing
- Rounders
- Rugby
- Tennis

Rowing at Queen’s Park High School

As one of only four state schools in the country to have its own Boathouse, we are immensely proud of our rowing club and its achievements.

Our rowers compete successfully at a national level and in 2012 two of our rowers were invited to join the Olympic GB training camp. Dry activities take place in our specialist fitness suite with water-based activities taking place throughout the week all year round.



“The school has brilliant facilities including a rowing club which supports rowing from a casual and fun level to a competitive level.”
Chris, Year 10 Student





Partnership with Parents

Our highest priority is to ensure that students are happy, safe and supported in school and we can only achieve this through a close partnership with parents and carers.

Good communication between home and school, including Parents' Evenings, the school website, newsletters, e-mails, text messages and social media, encourages closer links and better understanding.

If you need to speak to a member of staff about your child, then generally your child's Group Tutor should be your first point of contact. Your child's Group Tutor is the key person they can ask for help and advice and is the main link between home and school. The relationship between the Group Tutor and students is built up on a daily basis though tutorial time, through Personal, Social, Health and Citizenship Education (PSHCE) lessons and regular mentoring sessions. You will get to know your child's Group Tutor through our Review Day/Evening alongside regular Parents' Evenings and other whole school events. Your child's Head of House or Assistant Head of House may also be able to support you further should this be needed.

All parents can access real time student data online through our Parent Portal, including registers, homework assignments and assessment information. We encourage our parents to access this information and discuss regularly with their child how things are progressing in school. You will also receive written information about your child's assessment grades each term and a full written report annually. In addition to information about your child, you can also keep up to date with school life at Queen's Park via our school website, our monthly newsletters and our Twitter/Facebook accounts.

The school also has a very committed Parent Teacher Association (PTA) which actively supports both the school and our students. Every parent is automatically a member of the association when their child joins the school, so please be encouraged to get involved.



"My two daughters have thoroughly enjoyed their time at QPHS and have academically surpassed themselves. Our experience of the school has been one of admiration for the quality of teaching. Their impressive performance is all the more remarkable when you consider that this school takes pupils from the full range of academic abilities yet are able to hold their own with other schools who take only the top performers. I have no hesitation with sending my youngest daughter to follow in their footsteps."

Mr Stenhouse, Parent of Laura and Charlotte

How to Find and Contact Us

Queen's Park High School is brimming with the potential for future excellence. Come and visit us to find out more.



01244 981500



enquiries@qphs.co.uk



www.qphs.co.uk



[@qphschester](https://twitter.com/qphschester)



QPHS Chester



[@qphschester](https://www.instagram.com/qphschester)



Queen's Park High School
Queens Park Road
Chester CH4 7AE

